



GMT MONTHLY MEMBERSHIP PROGRESS REPORT

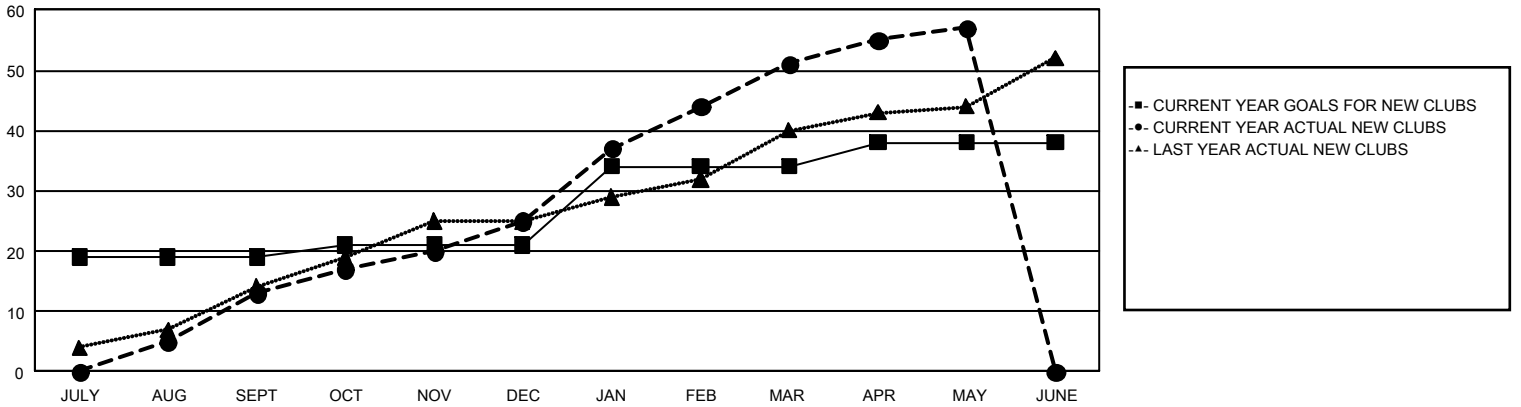
GAT Constitutional Area 5 - Korea

Results as of: 5/31/2026

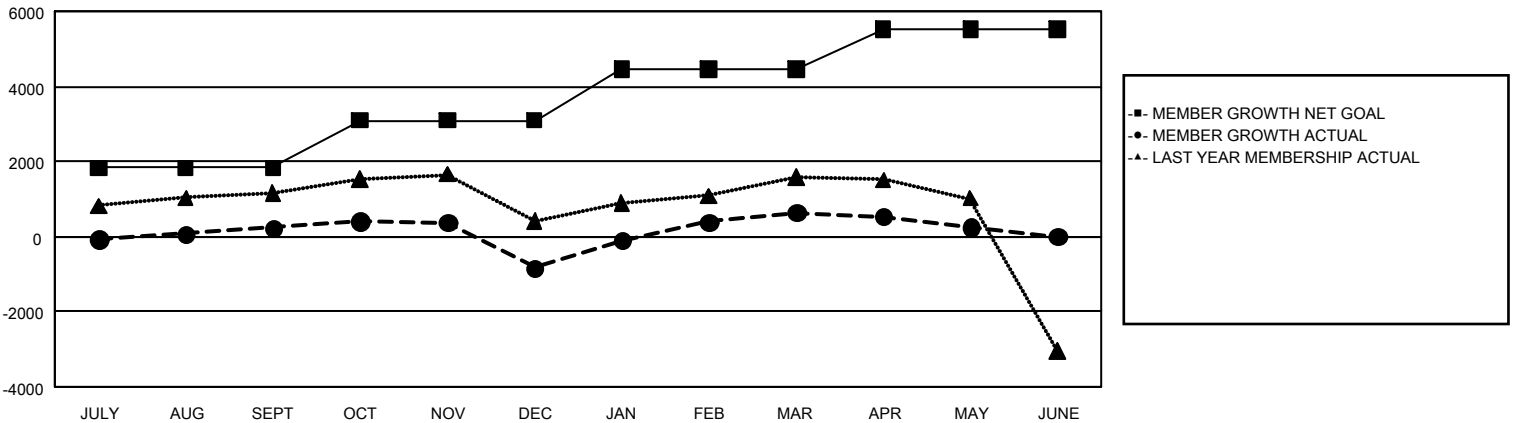
REPORT DOES NOT INCLUDE CLUBS IN UNDISTRICTED AREAS.

Clubs				Members			
RESULTS FOR 2025-2026				RESULTS FOR 2025-2026			
QUARTER	NEW CLUB GOAL	NEW CLUBS	DROPPED CLUBS	QUARTER	MEMBER GROWTH NET GOAL	MEMBER GROWTH ACTUAL	DROPPED MEMBERS ACTUAL (including transfers)
JULY/AUG/SEPT	19	13	7	JULY/AUG/SEPT	1,828	4,150	3,525
OCT/NOV/DEC	2	12	19	OCT/NOV/DEC	1,256	2,080	2,921
JAN/FEB/MAR	13	26	8	JAN/FEB/MAR	1,363	2,974	1,140
APR/MAY/JUNE	4	6	1	APR/MAY/JUNE	1,085	859	1,124

GOALS AND ACTUAL NEW CLUBS CUMULATIVE



GOALS AND ACTUAL MEMBERS CUMULATIVE



DROPPED CLUBS: 35	1,527 CLUBS OF 2,065 ADDED 1 OR MORE NEW MEMBERS	<u>GENDER DISTRIBUTION</u>	
<u>DROPPED MEMBERS</u>		MALE	49,540 (72.37%)
DECEASED	206	FEMALE	18,907 (27.62%)
CLUB CANCELLED	399	TOTAL FAMILY UNIT MEMBERS 2,594	
OTHER	8,105		
TOTAL	8,710		
CLICK HERE FOR CUMULATIVE MEMBERSHIP DATA		FAMILY MEMBERS PAYING HALF DUES 1,477	